

## DMH metal insulation support anchor



## Cross references

Metal insulation stress plate  
Hammer drill SDS plus  
Cordless hammer drill ABH 18  
Tool belt

## Application range

- > For fixing hard insulation materials
- > In combination with the EJOT® DMT metal insulation stress plate also for fixing soft insulation materials
- > For fixing insulation materials for high fire protection requirements

## Characteristics

- > Easy installation by driving in, self-expanding
- > Easy to install
- > Fire performance class A1: non-combustible according to DIN EN 13501-1:2010-01 (test certificate no. PZ 3.1/17-226-1)

## Notice

The EJOT® insulation support anchors are used to fasten soft and hard insulating material in rear-ventilated facades. The insulation board fastening is carried-out according to DIN 18516-1. Rotary hole drilling is obligatory in aerated concrete and perforated brick masonry.

The DMH-V may only be used subject to dry internal conditions (relative humidity < 70%) and in environments that can be assigned to corrosivity category C1 (insignificant) or C2 (low) according to DIN EN ISO 12944-2:1998-07.

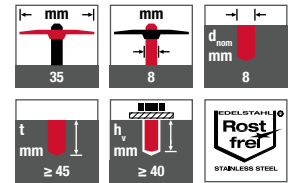
## Characteristic values

Axial distance $a \geq$	120 mm
Edge distance $a_e \geq$	60 mm
Minimum component thickness $h_{\min}$	80 mm
Recommended tensile loads $F_{\text{rec}}$	
Concrete $\geq$ B25	0.20 kN
Solid sand-lime brick	0.20 kN
Solid clay brick	0.20 kN
Vertically perforated brick	0.05 kN
Perforated sand-lime brick	0.05 kN
Recommended transverse loads $F_{\text{rec}}$	
Concrete $\geq$ B25	0.25 kN
Solid sand-lime brick	0.25 kN
Solid clay brick	0.25 kN
Vertically perforated brick	0.10 kN
Perforated sand-lime brick	0.15 kN

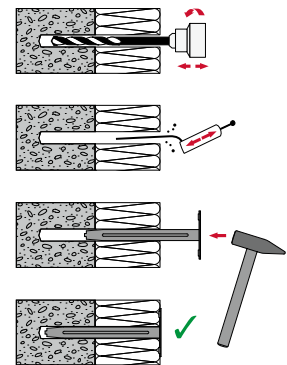
## Applications



## Technical specifications



## Certifications



Product online



Order description	Length L [mm]	Insulation thickness B ≤ [mm]	PU [pieces]	Price/100 [EUR]	Article number	EAN
<b>Alu-zinc steel</b>						
DMH-8x80-V	80	40	250		9800030301	4061245061528
DMH-8x110-V	110	70	250		9800030602	4061245061801
DMH-8x140-V	140	100	250		9800030603	4061245061818
DMH-8x170-V	170	130	250		9800030912	4061245061825
DMH-8x200-V	200	160	250		9800031215	4061245061832
DMH-8x250-V	250	210	200		9800031520	4061245061535
DMH-8x300-V	300	260	200		9800031300	4061245061849
<b>A2 stainless steel</b>						
DMH-8x80-E*	80	40	250		9800030302	4061245061542
DMH-8x110-E*	110	70	250		9800033603	4061245061559
DMH-8x140-E*	140	100	250		9800036904	4061245061856
DMH-8x170-E*	170	130	250		9800035912	4061245061863
DMH-8x200-E*	200	160	250		9800035215	4061245061566
DMH-8x250-E*	250	210	200		9800035520	4061245061573
DMH-8x300-E*	300	260	200		9800035300	4061245061580

\*Production article in case of order (see page 35)