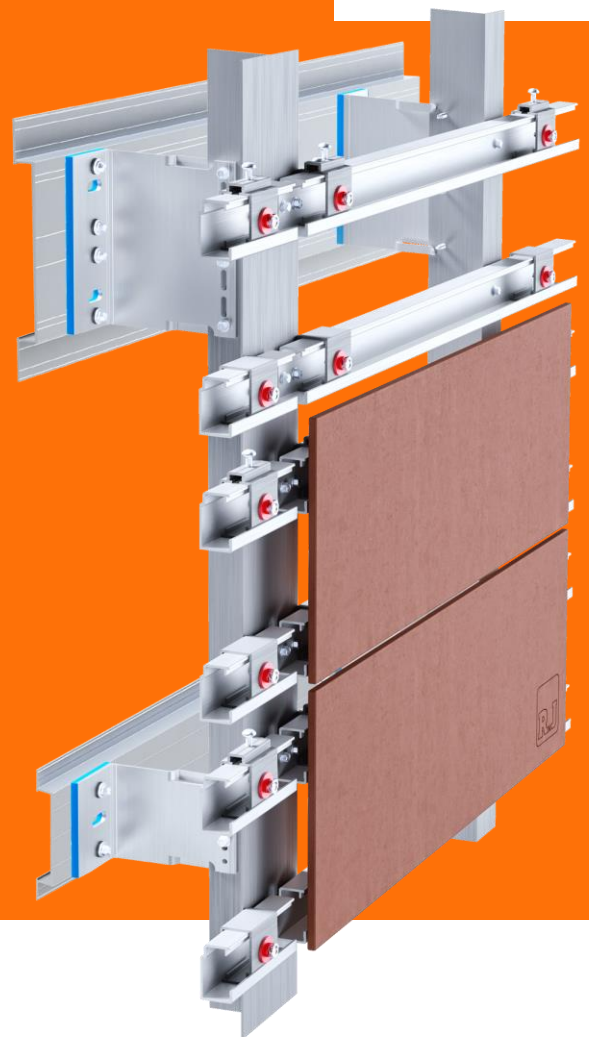


Tophat Support System

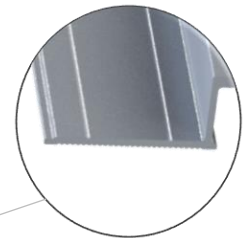
Product Data Sheet

New tophat designed for fixing helping hand brackets, where the SFS stud is out of alignment with the cladding line

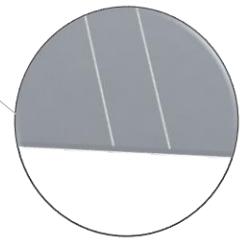


1st April 2020_Rev 1

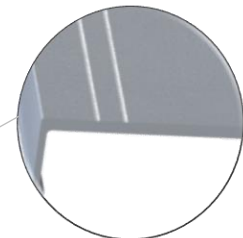
Product features



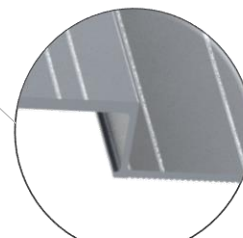
Ribbed under flanges to improve 'grip' to building substructure



Fixing position groove live to help bracket placement



Material thickness increased to improve fixing performance



Material cost engineered to reduce material in non structural locations

Designed for EVT Helping Hand brackets

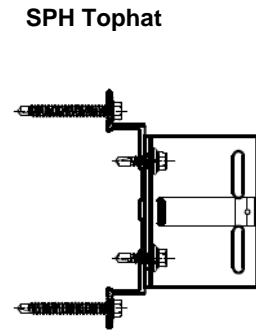
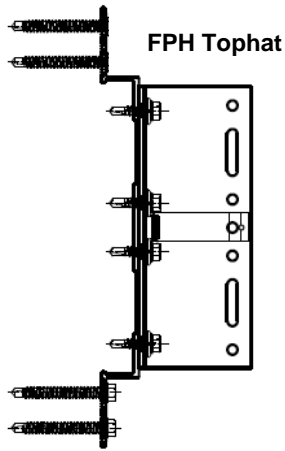
Cost engineered to achieve the same price point as the existing tophat solution

Designed to support heavy weight facades

Low profile to reduce impact on insulation

Material thickness in fixing locations for improved performance

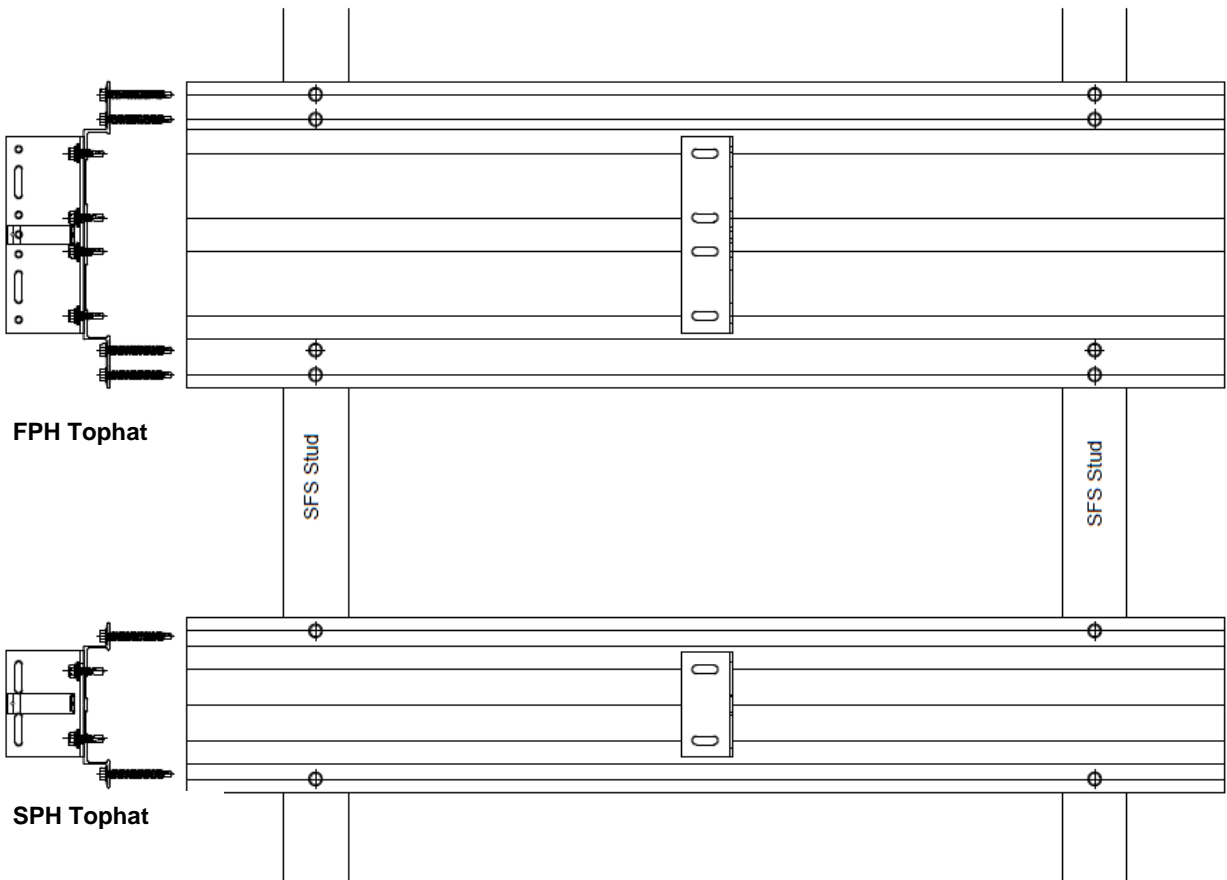
Section overview



FPH tophat increased flanges for fixings to be placed vertically to ensure the fixings are positioned into the centre of the SFS stud.

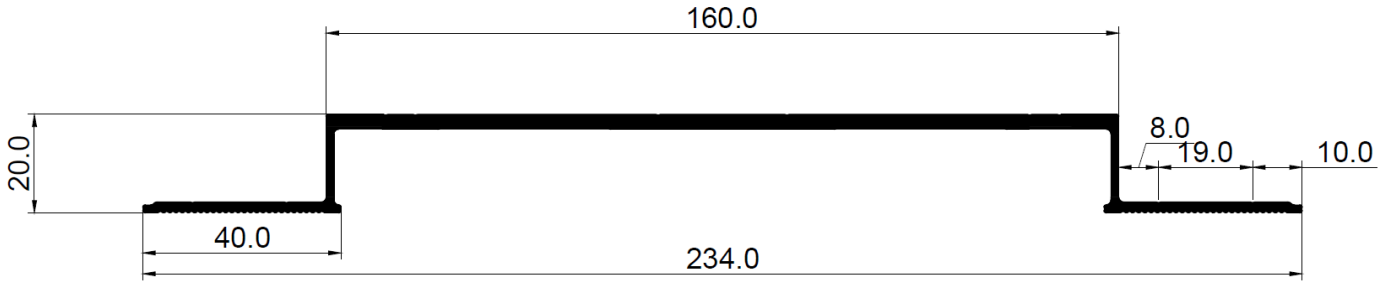
Fixing patterns replicate the same layout as standard bracket to SFS.

The depth of the tophat is designed to ensure the bracket fixing does not penetrate the SFS sheathing board.



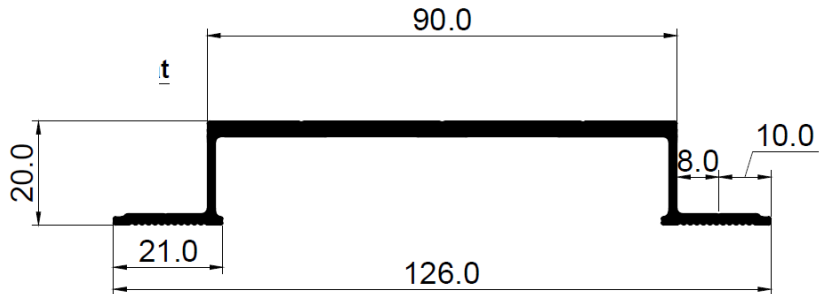
Section details

FPH tophat design



Manufactured to aluminium grade 6060-T66

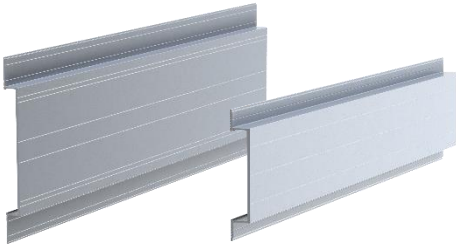
SPH tophat design



Manufactured to aluminium grade 6060-T66

Product codes and descriptions

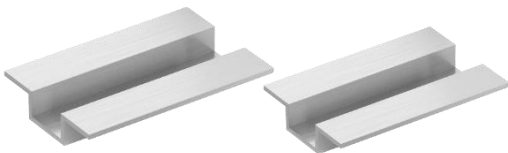
New top hat design available ex-stock from July 2020



New tophat designed for fixing FPH and SPH brackets to SFS, where the SFS stud position does not match the vertic

Code	Description	Pack Qty
Profiles in 6M Lengths		
558325	Hat Profile FPH - 234 x 20 x 2/3mm (6.0m Length)	1
558326	Hat Profile SPH - 126 x 20 x 2/3mm (6.0m Length)	1

Old top hat design on order to order only, after existing stock sold out. Approximately 2 week lead time on orders



Tophat designed for general applications

Code	Description	Pack Qty
546999	Hat Profile - 80 x 20 x 34 x 3mm (6.0m Length)*	1
520735	Hat Profile - 80 x 15 x 34 x 2mm (6.0m Length)*	1