

Invisible fixings

for EQUITONE facade panels

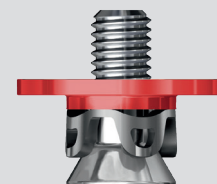


 **EQUITONE**
Fibre cement facade materials

www.equitone.co.uk

Tergo+ secret fixing

by fischer undercut technology for EQUITONE fibre cement facade panels



Product description

Undercut anchor for EQUITONE [linea], [tectiva], [materia], [natura] and [pictura] fibre cement. Application with bracket systems or other attachment parts.

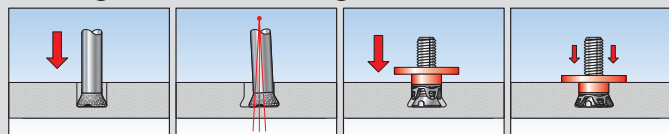
Advantages / benefits

- Fixings not visible from front of facade
- Stress-free fixing
- Statically optimised position of anchor
- Large panel sizes possible
- High load capability
- Optimised for long-life
- Independent of weather

Installation

After making the undercut hole, the anchor can be set with a special tool or simultaneously with attachment parts with a power tool.

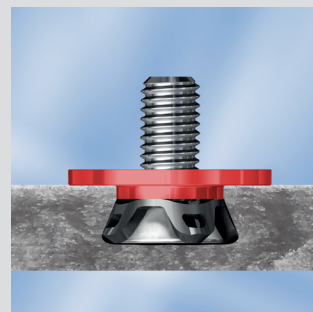
Drilling / anchor setting



Z-21.9-2050 [linea], [tectiva]
Z-21.9-2051 [materia], [natura], [pictura]

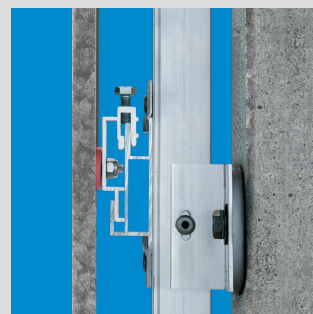
Technical data

Type	Item	min. EQUITONE panel thickness*	Installed anchor length mm a	Drill hole Ø mm	Colour code of shim washer	Anchorage depth mm	Thread diameter	Bolt projection length b	Box quantity pieces
Tergo+ 11x6 M6/T/10 PA	532 641	≥ 8	8,5	11	red	6	M6	10	250
Tergo+ 11x6 M6/T/13 PA	532 642	≥ 8	8,5	11	red	6	M6	13	250
Tergo+ 11x8 M6/T/10 PA	537 974	≥ 12	10,5	13	yellow	8	M6	10	250
Tergo+ 11x8 M6/T/13 PA	537 975	≥ 12	10,5	13	yellow	8	M6	13	250

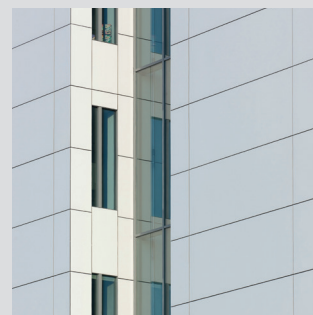


Application example

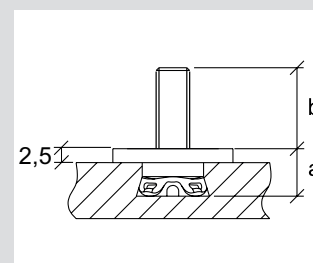
- **Anchor in panel**
Tergo+, fibre cement



- **Framework**
Facade panel with Tergo+ suspended on SystemOne light framework



- **Fibre cement facade**



fischer 
innovative solutions

EQUITONE
Fibre cement facade materials

fischer fixings UK Ltd

Whitely Road · Wallingford · Oxon · OX10 9AT
Tel: 01491 827900 · Email: info@fischer.co.uk
Web: www.fischer.co.uk

Marley Eternit

Lichfield Road, Branston, Burton-upon-Trent, DE14 3HD
Tel: 01283 722588 · Email: info@marleyeternit.co.uk
www.marleyeternit.co.uk

